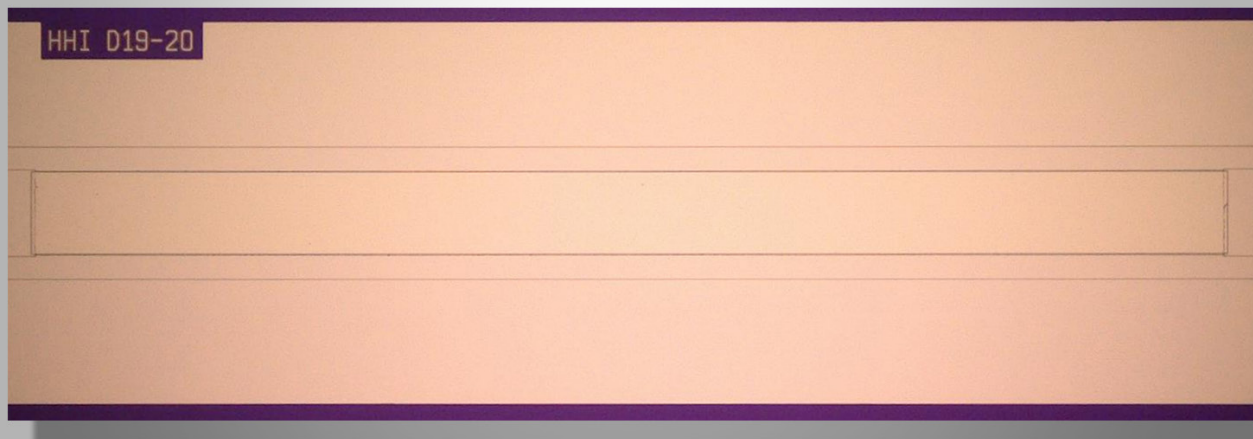


"EYE-SAFE" HIGH POWER BROAD AREA LASER DIODES



AT A GLANCE

- High Power Laser Diodes with 4.9W CW-output power @1550nm



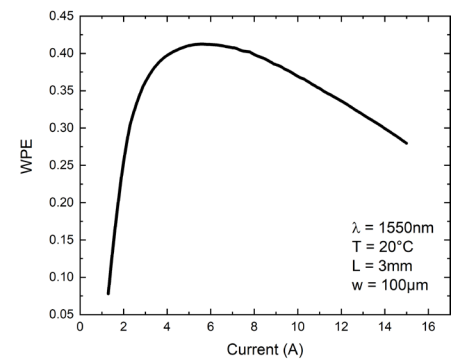
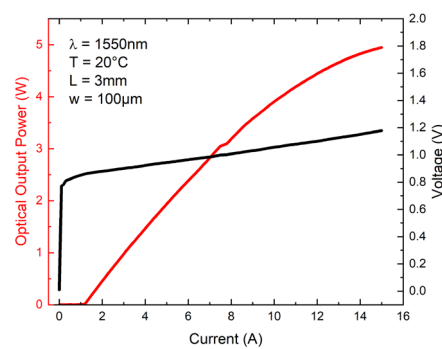
Features

- InP based structures
- High optical output power
- High slope efficiency
- Small fast-axis divergence
- Customized wavelengths
- Customized laser geometry
- Optional wavelength stabilization

Applications

- Medical applications
- Pump source for DPSSL
- Range finding/LIDAR
- Trace gas detection
- Material processing

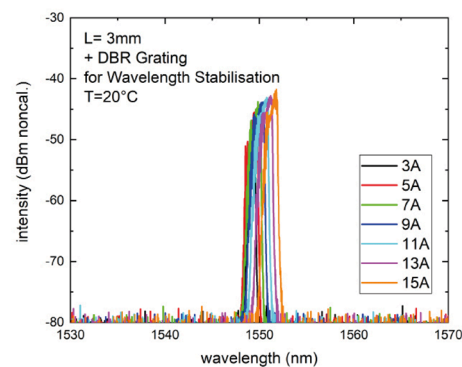
Preliminary data sheet of BA-Laser Diodes



Parameter	Symbol	Min	Typ	Max	Unit
Center Wavelength	λ_c		1550		nm
Optical Output Power (max.)	P_o			4.9	W
Spectral Width (3dB)	$\Delta\lambda$	8	10	12	nm
Slope Efficiency	η_0	0.3	0.35	0.4	W/A
Wall Plug Efficiency	η	0.28		0.4	
Threshold Current	I_{th}	1	1.2	1.4	A
Series Resistance	R_s	0.03	0.025	0.02	Ω
Far-Field Angle (FWHM)	$\Theta_{\perp}/\Theta_{\parallel}$		15x25		deg.
Emitter Width	w		100		μm

All Data mounted p-side down on Heatsink @ 20 °C

Laser Diodes can be customized in wavelength range of 1450nm - 1600nm



Spectra with optional wavelength stabilization



Dr. Martin Möhrle
 InP and RF department

Phone +49 30 31002-724
 martin.moehrle@hhi.fraunhofer.de

Fraunhofer Heinrich Hertz Institute
 Einsteinufer 37, 10587 Berlin
 Germany

www.hhi.fraunhofer.de/pc