

VISIBLE LIGHT COMMUNICATION UP TO 1 GBIT/S



AT A GLANCE

Plug-and-play optical wireless links based on off-the-shelf LEDs featuring broadband data transmission up to 1 Gbit/s

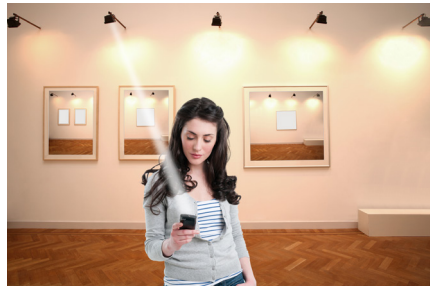


Specifications

- Light source: any current high-power LED
- Bidirectional data exchange
- Dynamic rate adaptation
- Adaptable optics depending on application
- Peak data rate 1 Gbit/s
- Low latency (< 2 ms)
- Universal RJ45 Ethernet Interface
- Footprint:
87 mm x 114 mm x 42 mm
(without lenses)

Benefits

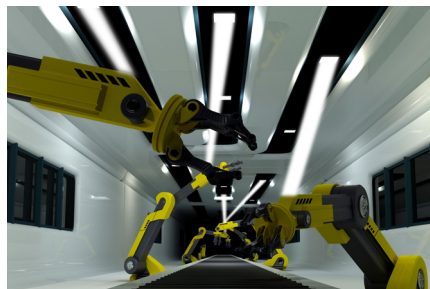
- Combination of lighting and data communication
- Available also with nearinfrared or ultraviolet LEDs
- Improved privacy
- CE certified



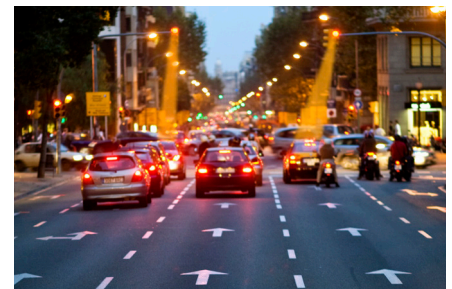
Indoor navigation



Networking, broadcasting



Industry production



Car-to-X communication

Applications

- Wireless communication in industrial environments
- Car-to-X-communication
- Optical Wi-Fi in RF-sensitive areas (hospitals)
- Sensor networks
- Advertising, messaging
- Optical wireless hotspot

Dr. rer. nat. Volker Jungnickel
Photonic Networks and Systems

Phone +49 30 31002-414
products-pn@hhi.fraunhofer.de

Fraunhofer Heinrich Hertz Institute
Einsteinufer 37, 10587 Berlin
Germany

www.hhi.fraunhofer.de/products-pn